

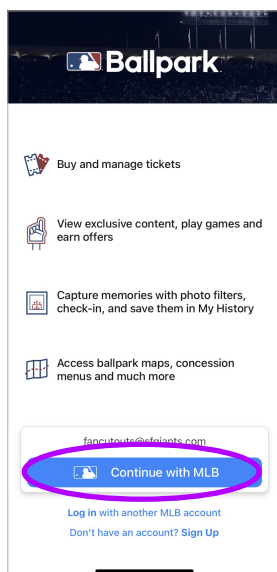


ACCESS SEASON TICKET MEMBER I.D. CARD

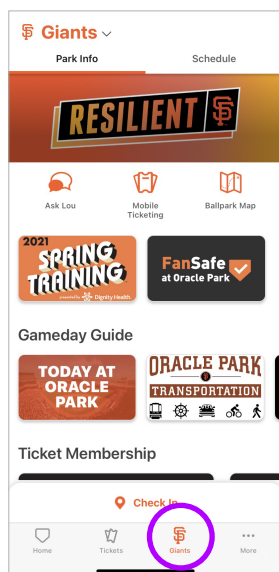
- 1 OPEN**
- 2 TAP CONTINUE WITH MLB TO LOG IN WITH YOUR MLB.COM ACCOUNT**

Or TAP **Don't have an account? Sign Up** to create an account

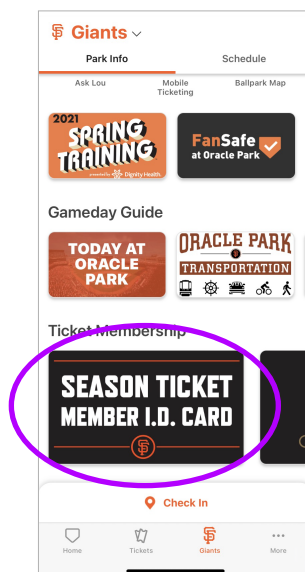
? *It can take up to two weeks for cards to be loaded*



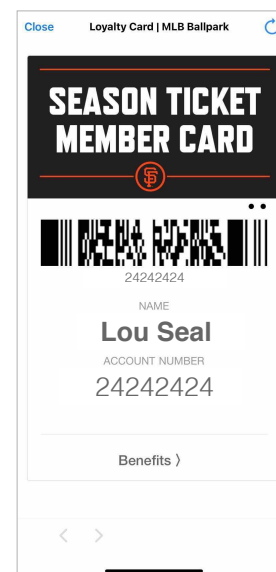
- 3 TAP GIANTS**
in the bottom menu



- 4 SCROLL DOWN TO TICKET MEMBERSHIP**
- 5 TAP SEASON TICKET MEMBER I.D. CARD**

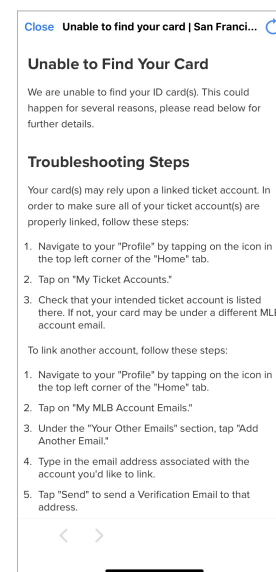


- 6** *Present barcode at Dugout Stores or apply the account number to mobile concession orders to receive your 20% discount*



- ? DON'T SEE YOUR ID CARD?**

*1. Confirm your Season Ticket account is verified.
TAP **Home**
TAP the **Profile icon** (top left)
TAP **My MLB Account Emails**
VERIFY or **ADD ANOTHER EMAIL***



QUESTIONS? CALL THE SEASON TICKET MEMBER HOTLINE AT 415-972-BALL (2255)